
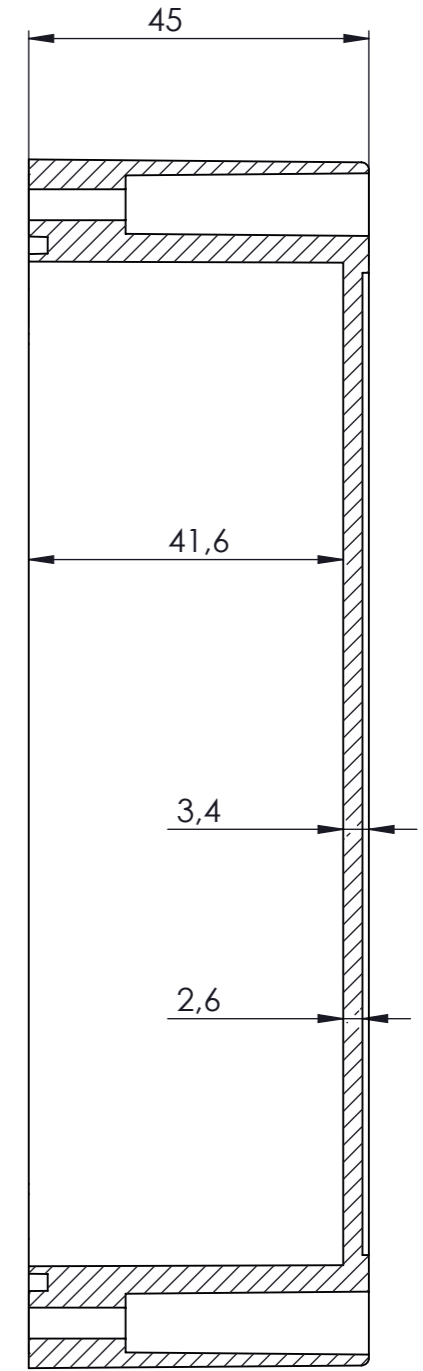
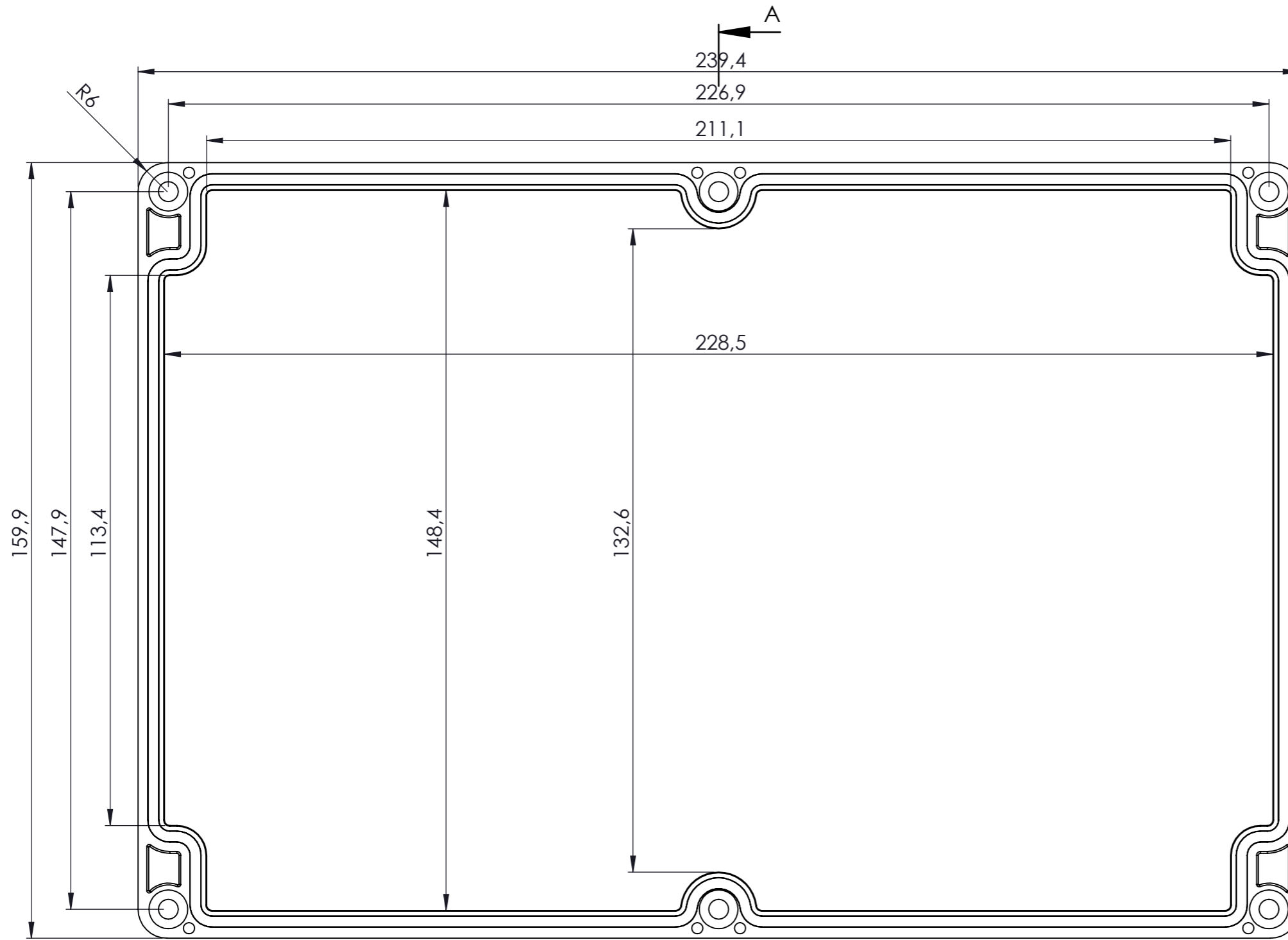


KESIT A-A

NAME	DATE	ARTICLE NO:	REVISION:	TITLE:
DRAWN Hayri BAL	26.11.19			SE-262 IP-67 Heavy Duty Enclosure
CHECKED Dursun Daşdemir	26.11.19			
 <b>www.altinkaya.com.tr</b>		COMMENTS: This drawing is subject to technical modification without prior notice. Typographical and other errors do not justify any claims for damages. All dimensions should be verified using an actual produced part.		DWG NO. SE-262-0-0 A4
PROPRIETARY AND CONFIDENTIAL THE INFORMATION CONTAINED IN THIS DRAWING IS THE SOLE PROPERTY OF ALTINKAYA ENCLOSURES. ANY REPRODUCTION IN PART OR AS A WHOLE WITHOUT THE WRITTEN PERMISSION OF ALTINKAYA ENCLOSURES IS PROHIBITED.		DİKKAT: BU RESİM VE ÜRÜN ÖNCEDEN HABER VERİLMEKSİZİN DEĞİŞTİREBİLİR. RESİM ÇİZİLRKEN HATASIZ OLMASINA ÇALIŞILMASINA RAĞMEN RESİMDE HATALAR BULUNABİLİR. RESİMDEKİ HATALARDAN DOLAYI OLUŞABİLECEK ZARARLAR İÇİN ALTINKAYA HİÇ BİR SORUMLULUK KABUL ETMEZ. BÜTÜN ÖLÇÜLER KULLANILMADAN ÖNCE ÜRETİLMİŞ GERÇEK NUMUNEDEN KONTROL EDİLMELİDİR.		
MATERIAL:		WEIGHT:		SCALE:1:2

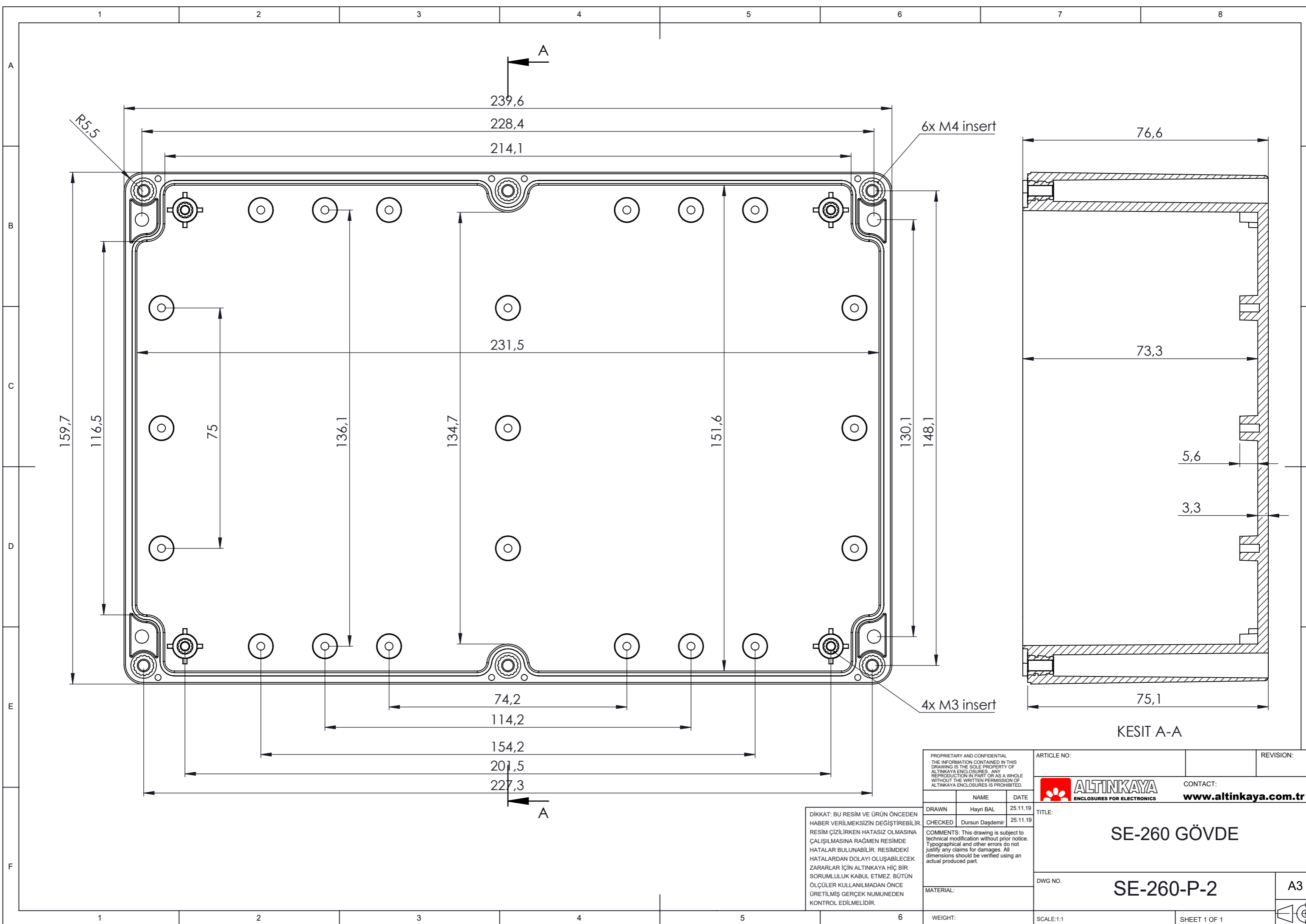


KESIT A-A

DİKKAT: BU RESİM VE ÜRÜN ÖNCEDEN HABER VERİLMEKSİZİN DEĞİŞTİREBİLİR. RESİM ÇİZİLMESİNİN HATASIZ OLMASINA ÇALIŞILMASINA RAĞMEN RESİMDEKİ HATALARDAN DOLAYI OLUŞABİLECEK ZARARLAR İÇİN ALTINKAYA HiÇ BİR SORUMLULUK KABUL ETMEZ. BÜTÜN ÖLÇÜLER KULLANILMADAN ÖNCE ÜRETİLMİŞ GERÇEK NUMUNEDEN KONTROL EDİLMELİDİR.

PROPRIETARY AND CONFIDENTIAL THE INFORMATION CONTAINED IN THIS DRAWING IS THE SOLE PROPERTY OF ALTINKAYA ENCLOSURES. ANY REPRODUCTION IN PART OR AS A WHOLE WITHOUT THE WRITTEN PERMISSION OF ALTINKAYA ENCLOSURES IS PROHIBITED.			ARTICLE NO:	REVISION:
DRAWN Hayri BAL 26.11.19 CHECKED Dursun Dağdemir 26.11.19			CONTACT: <a href="http://www.altinkaya.com.tr">www.altinkaya.com.tr</a>	
COMMENTS: This drawing is subject to technical modification without prior notice. Typographical and other errors do not justify any claims for damages. All dimensions should be verified using an actual produced part.			TITLE: <b>SE-262 KAPAK</b>	
MATERIAL:			DWG NO: <b>SE-262-P-1</b>	A3
WEIGHT:			SCALE:1:1	SHEET 1 OF 1






R5,5

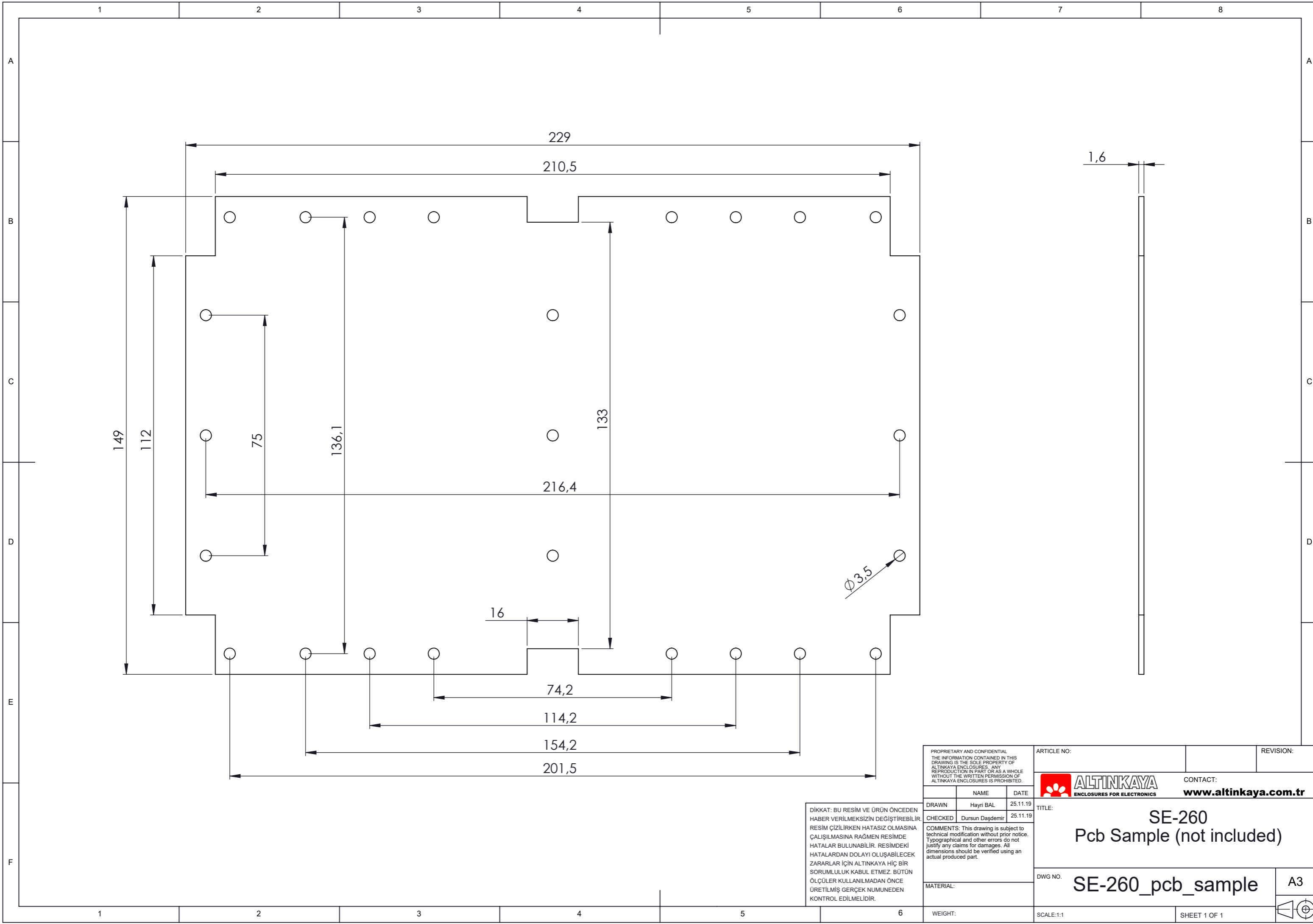
6x M4 insert

4x M3 insert

KESIT A-A

DİKKAT: BU RESİM VE ÜRÜN ÖNCEDEN HABER VERİLMEKSİZİN DEĞİŞTİREBİLİR. RESİM ÇİZİLİRKEN HATASIZ OLMASINA ÇALIŞILMASINA RAĞMEN RESİMDEKİ HATALAR BULUNABİLİR. RESİMDEKİ HATALARDAN DOLAYI OLUŞABİLECEK ZARARLAR İÇİN ALTINKAYA HiÇ BİR SORUMLULUK KABUL ETMEZ. BÜTÜN ÖLÇÜLER KULLANILMADAN ÖNCE ÜRETİLMİŞ GERÇEK NUMUNEDEN KONTROL EDİLMELİDİR.

<small>PROPRIETARY AND CONFIDENTIAL. THE INFORMATION CONTAINED IN THIS DRAWING IS THE SOLE PROPERTY OF ALTINKAYA ENCLOSURES. ANY REPRODUCTION IN PART OR AS A WHOLE WITHOUT THE WRITTEN PERMISSION OF ALTINKAYA ENCLOSURES IS PROHIBITED.</small>		ARTICLE NO:	REVISION:						
<table border="1"> <tr> <th>NAME</th> <th>DATE</th> </tr> <tr> <td>DRAWN Hayri BAL</td> <td>25.11.19</td> </tr> <tr> <td>CHECKED Dursun Dağdemir</td> <td>25.11.19</td> </tr> </table>	NAME	DATE	DRAWN Hayri BAL	25.11.19	CHECKED Dursun Dağdemir	25.11.19	 <p>ENCLOSURES FOR ELECTRONICS</p>	CONTACT:	<a href="http://www.altinkaya.com.tr">www.altinkaya.com.tr</a>
NAME	DATE								
DRAWN Hayri BAL	25.11.19								
CHECKED Dursun Dağdemir	25.11.19								
<p>COMMENTS: This drawing is subject to technical modification without prior notice. Typographical and other errors do not justify any claims for damages. All dimensions should be verified using an actual produced part.</p>		TITLE: SE-260 GÖVDE							
MATERIAL:		DWG NO: SE-260-P-2	A3						
WEIGHT:		SCALE:1:1	SHEET 1 OF 1						



PROPRIETARY AND CONFIDENTIAL  
THE INFORMATION CONTAINED IN THIS  
DRAWING IS THE SOLE PROPERTY OF  
ALTINKAYA ENCLOSURES. ANY  
REPRODUCTION IN PART OR AS A WHOLE  
WITHOUT THE WRITTEN PERMISSION OF  
ALTINKAYA ENCLOSURES IS PROHIBITED.

ARTICLE NO: \_\_\_\_\_ REVISION: \_\_\_\_\_

**ALTINKAYA**  
ENCLOSURES FOR ELECTRONICS  
CONTACT: [www.altinkaya.com.tr](http://www.altinkaya.com.tr)

	NAME	DATE
DRAWN	Hayri BAL	25.11.19
CHECKED	Dursun Daşdemir	25.11.19

TITLE:  
**SE-260**  
**Pcb Sample (not included)**

COMMENTS: This drawing is subject to  
technical modification without prior notice.  
Typographical and other errors do not  
justify any claims for damages. All  
dimensions should be verified using an  
actual produced part.

MATERIAL:  
WEIGHT:

DWG NO: **SE-260\_pcb\_sample** A3  
SCALE:1:1 SHEET 1 OF 1

DİKKAT: BU RESİM VE ÜRÜN ÖNCEDEN  
HABER VERİLMEKSİZİN DEĞİŞTİREBİLİR.  
RESİM ÇİZİLİRKEN HATASIZ OLMASINA  
ÇALIŞILMASINA RAĞMEN RESİMDE  
HATALARDAN DOLAYI OLUŞABİLECEK  
ZARARLAR İÇİN ALTINKAYA HiÇ BİR  
SORUMLULUK KABUL ETMEZ. BÜTÜN  
ÖLÇÜLER KULLANILMADAN ÖNCE  
ÜRETİLMİŞ GERÇEK NUMUNEDEN  
KONTROL EDİLMELİDİR.