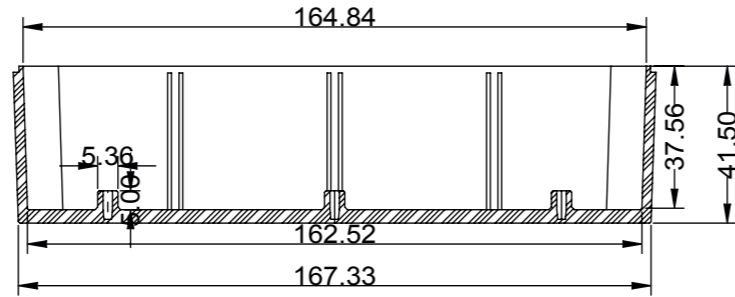
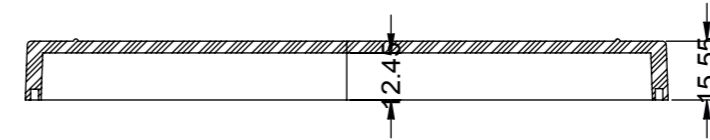


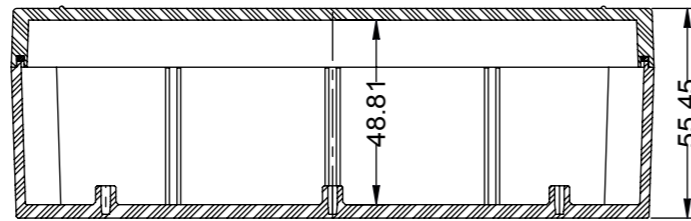
KAPAK



GOVDE KESITI



KAPAK KESITI



GOVDE - KAPAK KESITI

PROPRIETARY AND CONFIDENTIAL  
 THE INFORMATION CONTAINED IN THIS DRAWING IS  
 THE SOLE PROPERTY OF ALTINKAYA ENCLOSURES.  
 ANY REPRODUCTION IN PART OR AS A WHOLE  
 WITHOUT THE WRITTEN PERMISSION OF ALTINKAYA  
 ENCLOSURES IS PROHIBITED.

ARTICLE NO:

REVISION:

	NAME	DATE
DRAWN	Dursun Daşdemir	29.07.08
CHECKED	Ali Altınışık	29.07.08

**ALTINKAYA**  
 ENCLOSURES FOR ELECTRONICS

CONTACT:  
[www.altinkaya.com.tr](http://www.altinkaya.com.tr)

TITLE:

**SE-050 Contalı Kutu**

COMMENTS:  
 DIMENSIONS ARE IN MILIMETRES,  
 DEBUR AND BREAK SHARP EDGES

DWG NO:

**A3**

MATERIAL:

WEIGHT:

SCALE: 1:2

SHEET 1 OF 1

